

Think Like An Opera Singer

Grade Level: Grades 6-12

Objective: Students will be able to define voice types and analyze singers' vocal ranges and stylistic elements by researching notable singers, using the range trainer app, and analyzing artists with similar ranges.

Vocabulary: Genre, Voice Type, Vocal Range

Presentation Slides:

[Think Like An Opera Singer: What Is Vocal Range?](#)

Project Expectations:

[Vocal Range Project Expectations](#)

Assessments:

[Vocal Range Presentation Rubric](#)

National Core Arts Standards:

Creating

1. Generate and conceptualize artistic ideas and work
2. Organize and develop artistic ideas and work.
3. Refine and complete artistic work.

Performing / Presenting / Producing

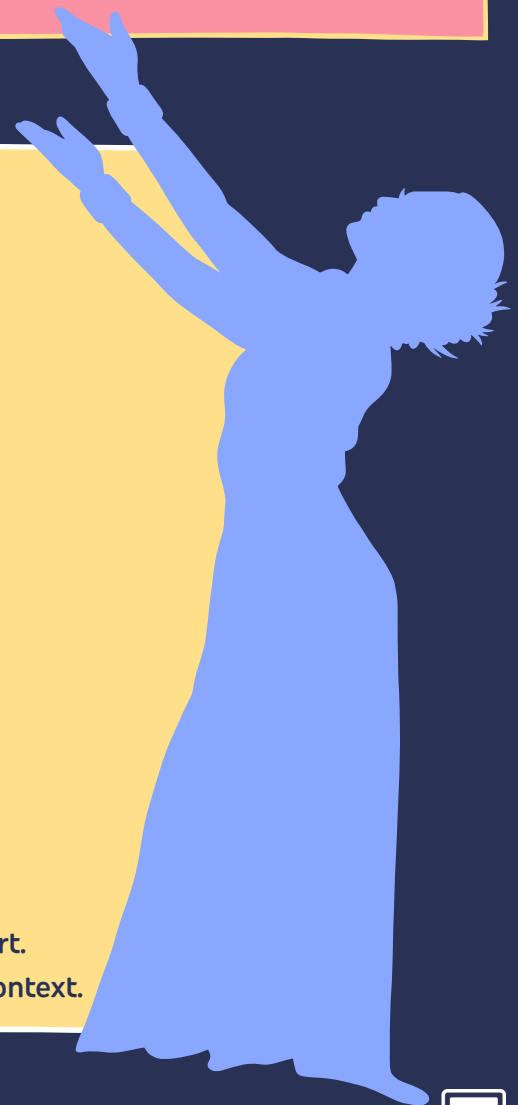
4. Select, analyze, and interpret artistic work for presentation.
5. Develop and refine artistic techniques and work for presentation.
6. Convey meaning through the presentation of artistic work.

Responding

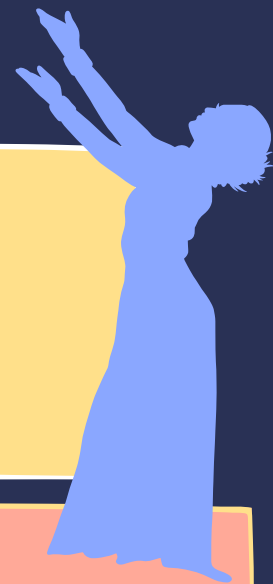
7. Perceive and analyze artistic work.
8. Interpret intent and meaning in artistic work.
9. Apply criteria to evaluate artistic work.

Connecting

10. Synthesize and relate knowledge and personal experiences to make art.
11. Relate artistic ideas and works with societal, cultural, and historical context.



Think Like An Opera Singer



Activities:

1. Teacher will share videos of notable singers of at least 2 different vocal ranges across diverse time periods and genres of music
2. Teacher will utilize reflection questions for group discussion
3. Demonstrate how to determine vocal range using the [Range Trainer App](#)
4. Teacher will share [Project Expectations](#) and [Presentation Rubric](#) with students

Vocal Range Resources:

Range	Singer Example(s)	Listening Activity
Soprano	Ariana Grande (Pop), Whitney Houston (Pop/R&B), Leontyne Price (Opera)	Listen to Grande's " No Tears Left to Cry ," Whitney Houston's " I Will Always Love You ," and Price's " O Patria Mia "
Mezzo-Soprano	Beyoncé (Pop), Aretha Franklin (Soul), Denyce Graves-Montgomery (Opera)	Compare Beyoncé's " Halo ," Franklin's " Respect ," and Graves-Montgomery's " Habanera from Carmen "
Alto	Adele (Pop), Tracy Chapman (Folk/Soul), Ella Fitzgerald (Jazz), Marian Anderson (Opera)	Listen to Adele's " Someone Like You " and Chapman's " Fast Car ," Fitzgerald's " It Don't Mean A Thing " and Anderson's " Ave Maria "
Tenor	Bruno Mars (Pop/R&B), Freddy Mercury (Rock), Luciano Pavarotti (Opera)	Listen to Bruno Mars' " When I Was Your Man ," Queen's " Bohemian Rhapsody " and Pavarotti's " Nessun Dorma "
Baritone	John Legend (R&B), Elvis Presley (Rock and Roll), Nat King Cole (Jazz)	Listen to Legend's " All of Me ," Presley's " Love Me Tender ," and Cole's " Unforgettable "
Bass	Johnny Cash (Country), Barry White (Soul), Paul Robeson (Musicals, Spirituals)	Listen to Cash's " Ring of Fire ," White's " Can't Get Enough of Your Love ," and Robeson's " Ol' Man River "

Reflection Questions:

1. How would you describe the singer's voice utilizing musical vocabulary?
2. Which singer's voice do you connect with the most? Why?
3. How does each singer use their voice differently?
4. How do different vocal ranges change the feeling of a song across different musical genres/styles?
5. What musical genre or style of singing do you connect with most?
6. Which vocal range do you think your own voice might fit into?